

Retaining Wall Redesigned Giving a 25% Cost Saving



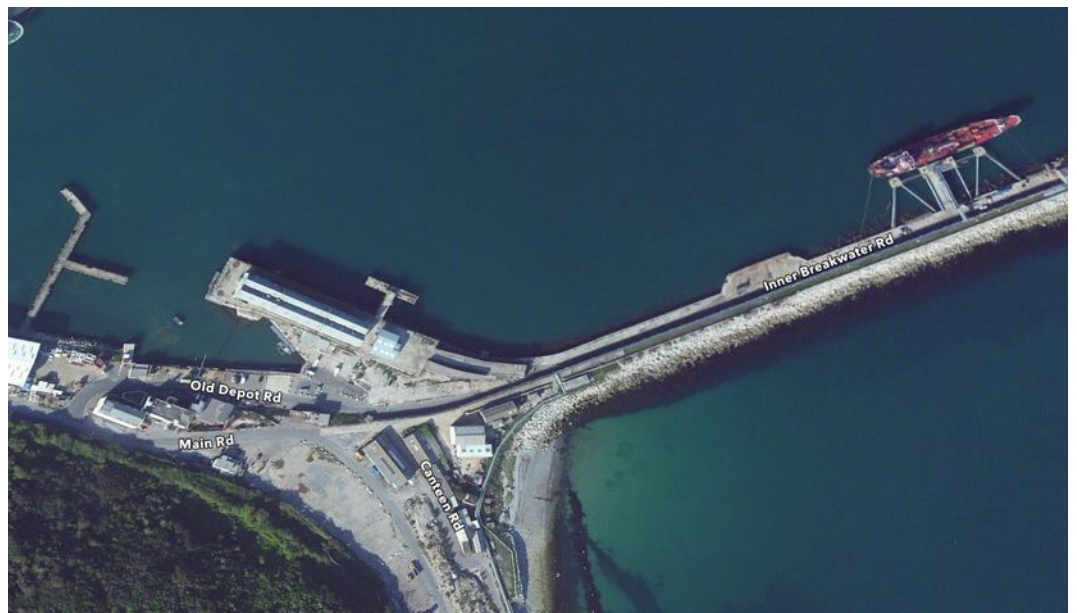
Paul Williams the Structural Engineer said.

"Designing an earth wall solution for this project made sense.

We modeled the solution using our ground modeling tool, then looked at various ways we could push the design to obtain the best economic solution.

The final solution delivered a wall that was simple to construct, fast to build and was the best economical solution for the problem"

Portland Port had a requirement to construct a new hardstanding to store cargo for a new shipping contract. The land they had available was sloping



The land was surveyed and local engineers designed a standard cast insitu solution. The port obtained a price from a local contractor but the price was over budget. The contractor did some research and found Blockwalls.

THE CHALLENGE

Alex Hayes from Portland Port was looking for an alternative design to the one he had, to see if he could bring the project in on budget.

We request the design requirements and looked at value engineering a solution using our blocks.

The solution our engineers designed was a reinforced earth wall.

The foundation followed the slope of the ground in steps. The wall height went from 5m to 1.8 m. The geo mat was designed from lengths of 5m to 2m depending of the wall height.

THE SOLUTION

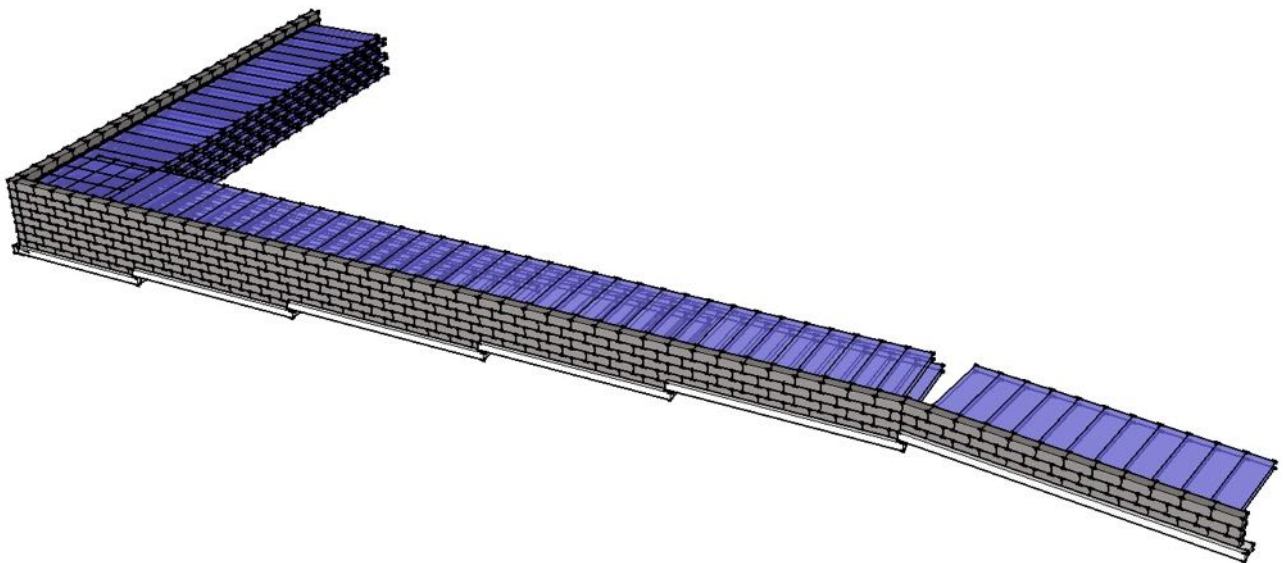
The reinforced earth wall solution worked out to be 25% more economical than the traditional cast in-situ solution.

The wall has a design life span of 120 years.

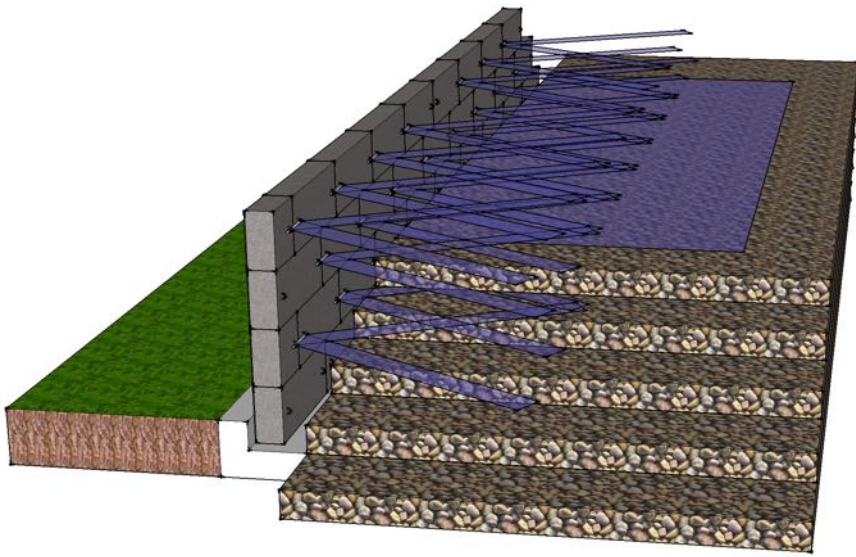
The fill for the reinforced earth wall was to be selected granular fill 6F2 - 6I/J or selected cohesive fill class 7B/C/D

The method of construction was to cut the mat from the roll at 8.3m lengths. Lay the bottom layer of mat and fold up and over the hooks, then slide the holding rod through the hooks to hold the mat. Lay 300mm of fill over the first mat, then fold the second layer over the stone. Fill over this layer with 300mm of fill and repeat until completed.

The geo mat used was E-Grid 95R

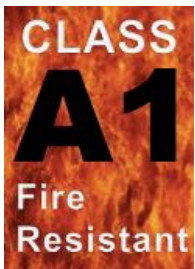


Retaining Wall Solutions



EARTH BLOC Retaining Walls can be built economically from 3m to 15m high

Our blocks have a class A1 fire rating giving fire protection when designed for fire segregation of apartments.



OUR PEDIGREE

Working in partnership with recycling businesses.

We come from the recycling and civil engineering sectors and have invested in the development of advanced concrete technology.

The Waste (England and Wales) (Amendment) Regulations 2012, which became effective in January 2015 means recycling depots must ensure proper segregation of waste streams prior to treatment or disposal.

Block Walls are the ideal solution for waste management operators who are seeking cost effective solutions to properly manage their storage obligations.

PRODUCTS

you can use Block Walls for constructing:

 Retaining walls

 Fire Walls

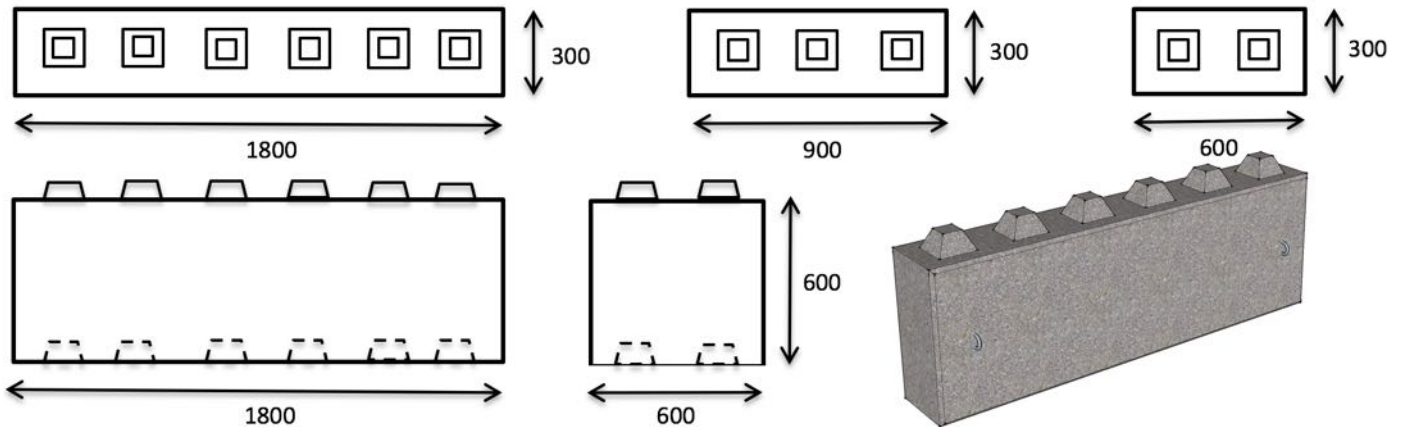
 Blast Walls

 Bund Walls

 Security Barriers

The list is almost endless, the only limit is your imagination.

Call **07896 246 224** to order your blocks



Block Type	L x W x H (mm)	Weight (Approx kg)
WALLBLOC 18.3.6	1800 x 300 x 600	712
WALLBLOC 9.3.6	900 x 300 x 600	356
WALLBLOC 6.3.6	600 x 300 x 600	237

WHAT TO DO NEXT

You send us a basic description or drawing of the area you need to construct and a description of the operation. We will do the rest.

WE MAKE BUYING SIMPLE

1. Our design team will establish which specification will best fit your environment and calculate the number of blocks required to do the job
2. We quote, you order, we make
3. We deliver

Call or complete our enquire form at - www.blockwalls.co.uk/contact

Call **07896 246 224** to order your blocks